



# JORNADAS DE MOVILIDAD DE EDUCACIÓN SUPERIOR ENTRE PAÍSES DEL PROGRAMA (KA103)

Leganés, 15-16 de octubre de 2019



# NOVEDADES DEL PROGRAMA ERASMUS+

## ÍNDICE

1. Convocatorias Erasmus+ 2014 a 2018
2. Convocatoria Erasmus+ 2019
3. Brexit
4. Herramienta de autoevaluación de la ECHE
5. Estudio de impacto Erasmus+ 2019
6. Estudio del impacto económico de los estudiantes internacionales en España 2018

1

# Convocatorias Erasmus+ 2014 a 2018

## KA103 - Situación de las convocatorias Erasmus+

2014

cerrada

2015

cerrada

2016

cerrada

2017

Informes  
finales 16  
meses  
evaluados

Informes  
finales 24  
meses

2018

Adjudicación  
final

Firma de  
enmiendas

2019

Adjudicación  
inicial

Firma de  
convenios



GOBIERNO  
DE ESPAÑA

MINISTERIO  
DE CIENCIA, INNOVACIÓN  
Y UNIVERSIDADES

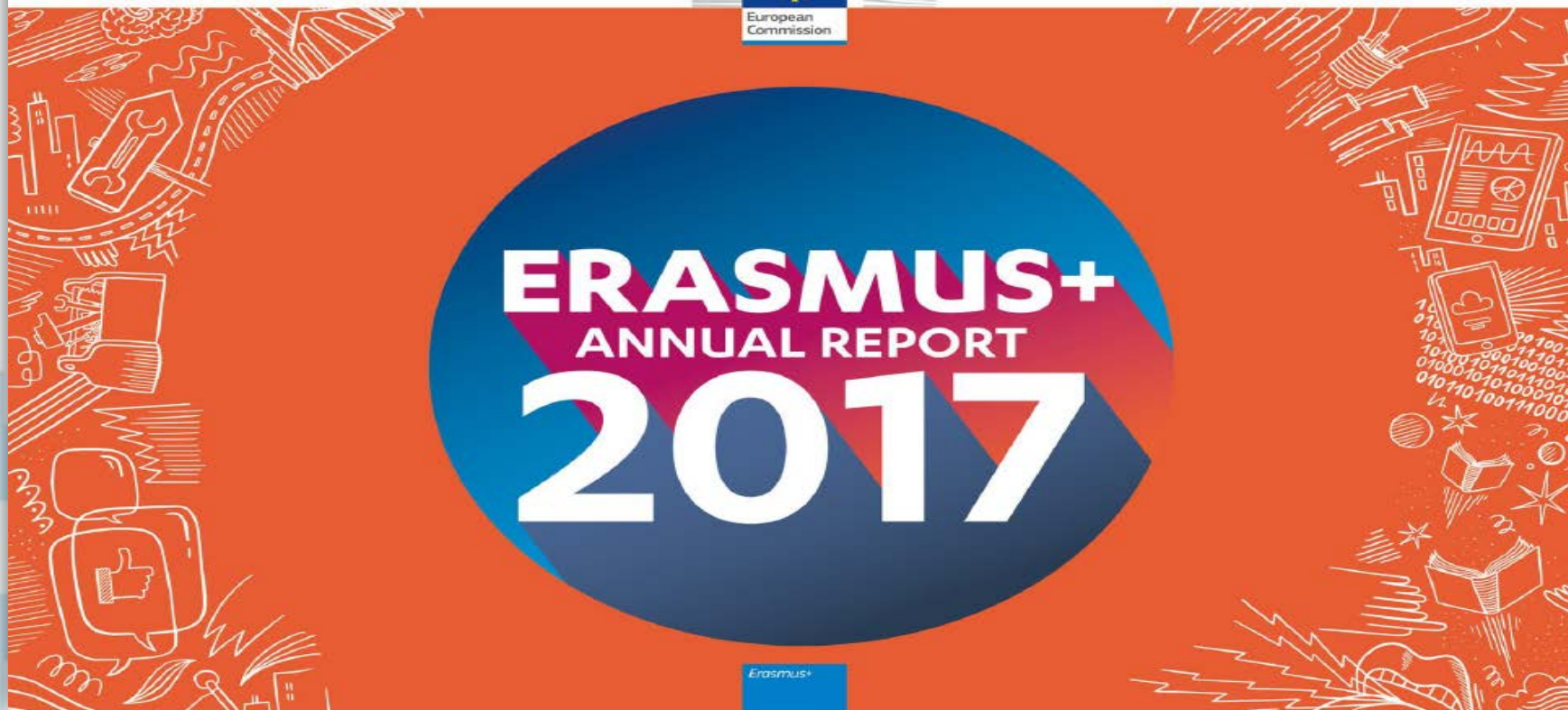
sepie

SERVICIO ESPAÑOL PARA LA  
INTERNACIONALIZACIÓN DE LA EDUCACIÓN



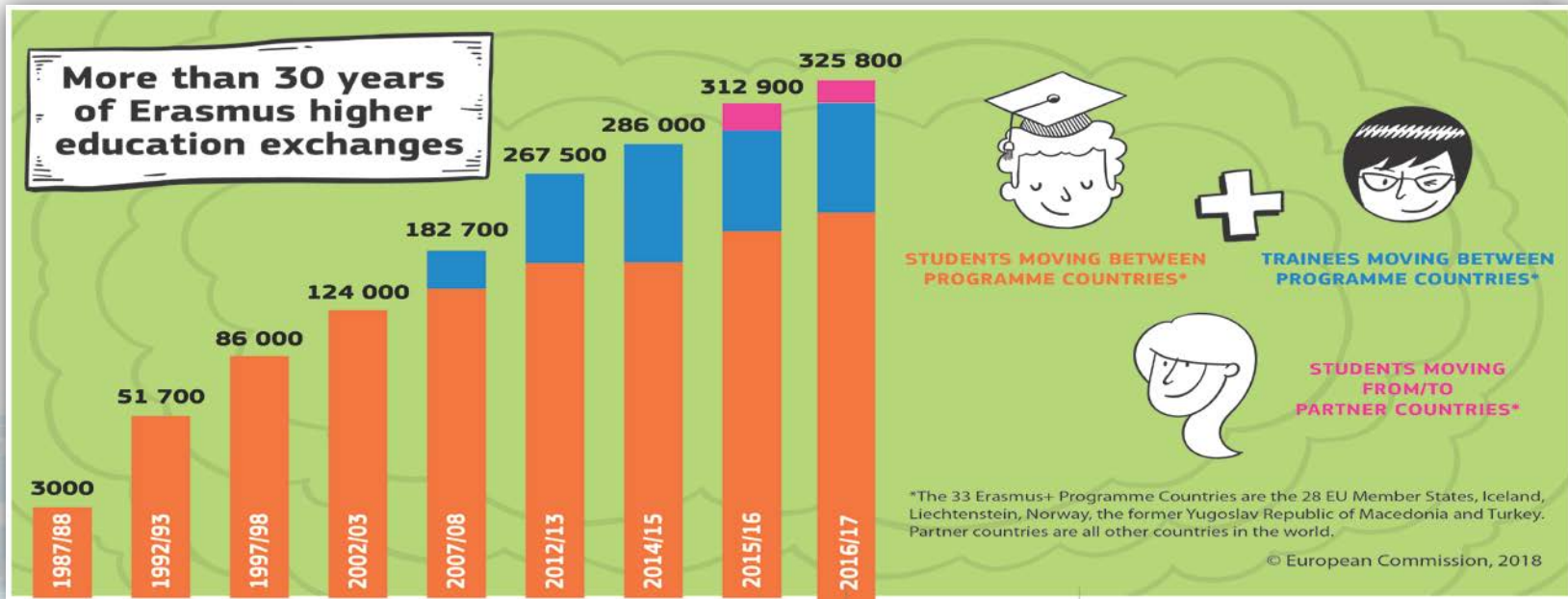
Erasmus+

Enriqueciendo vidas, abriendo mentes.



Erasmus+

# Convocatoria Erasmus+ 2016: Resultados – Europa





GOBIERNO  
DE ESPAÑA

MINISTERIO  
DE CIENCIA, INNOVACIÓN  
Y UNIVERSIDADES

sepie

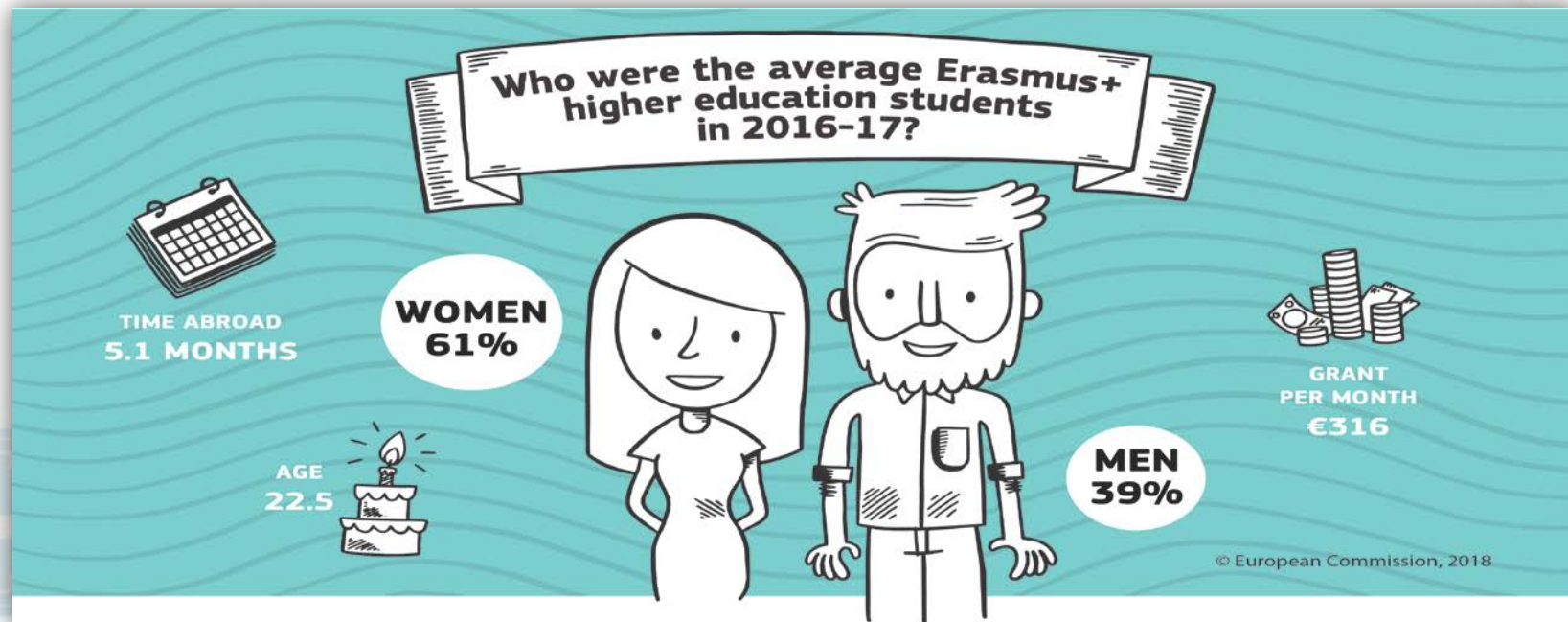
SERVICIO ESPAÑOL PARA LA  
INTERNACIONALIZACIÓN DE LA EDUCACIÓN



Erasmus+

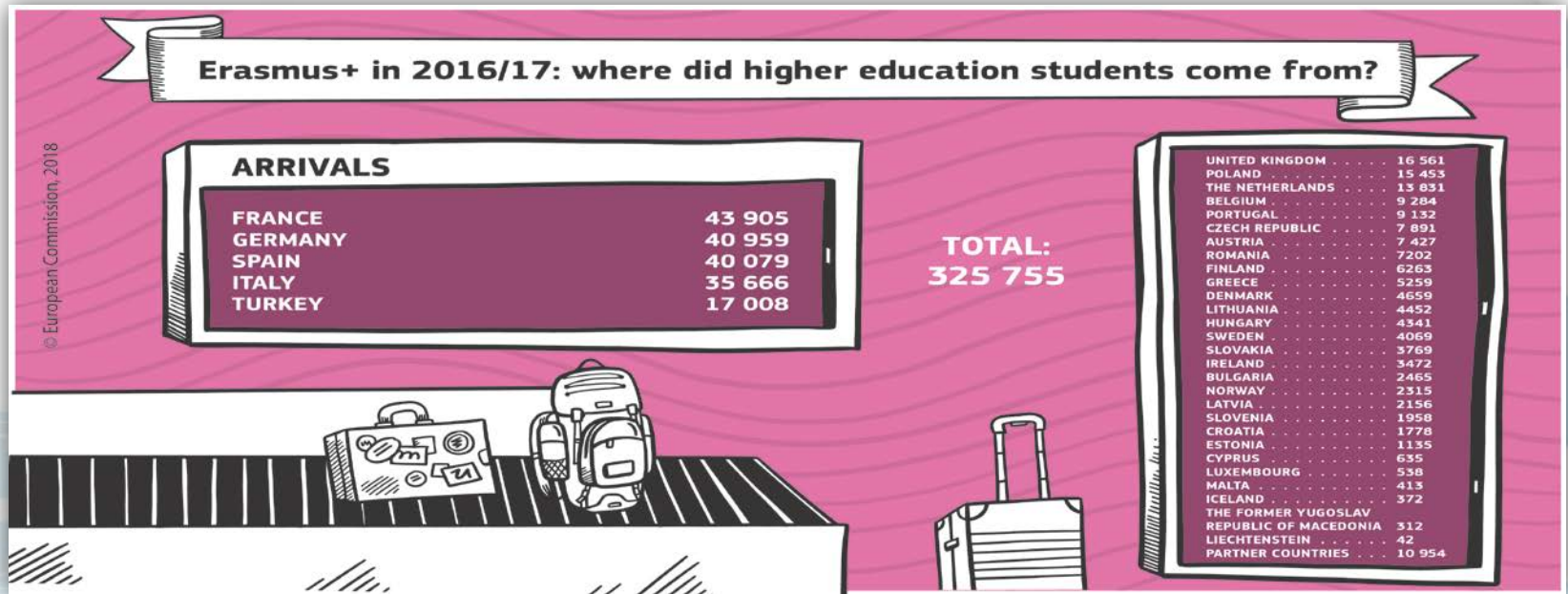
Enriqueciendo vidas, abriendo mentes.

## Perfil de un/a estudiante Erasmus en 2016

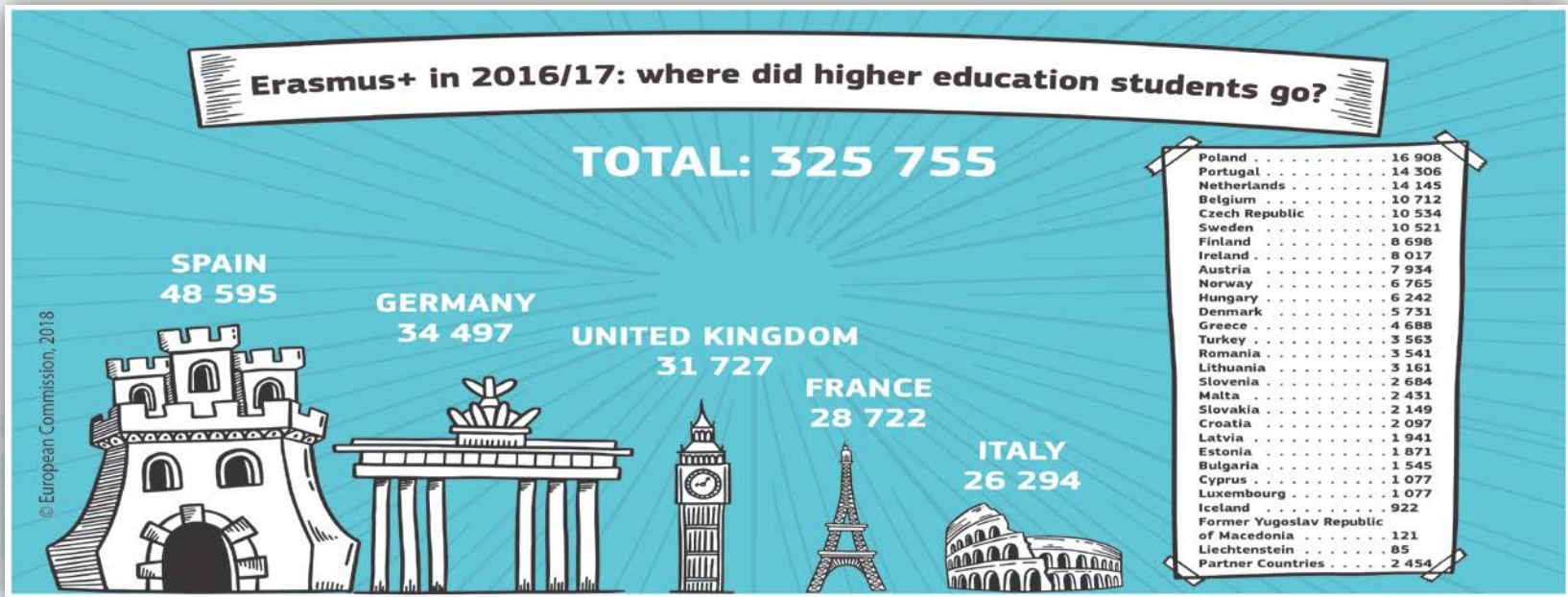




# España fue el tercer país que más estudiantes envió



# España, destino favorito de los Erasmus desde 2001



# Convocatoria Erasmus+ 2016: Resultados - España



Students



Trainees

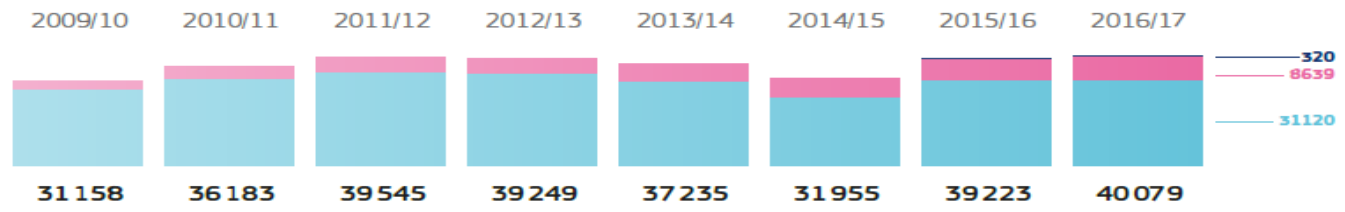


Students to/from partner countries\*

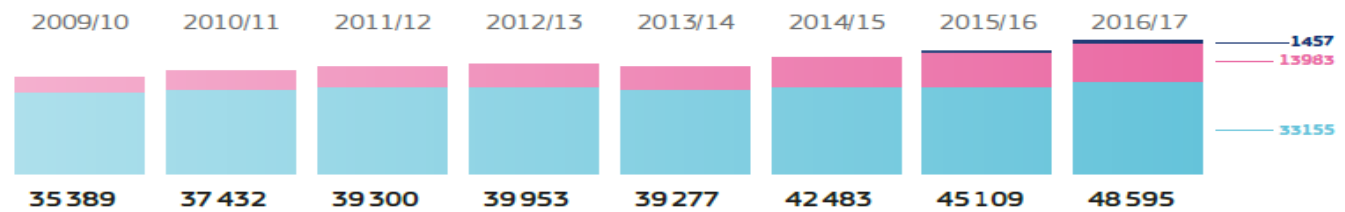


Total outgoing/incoming students and trainees

## OUTGOING STUDENTS AND TRAINEES



## INCOMING STUDENTS AND TRAINEES



## STAFF

	2014/15	2015/16	2016/17
Outgoing	5 066	6 057	6 687
Incoming	5 726	7 319	8 541



# Convocatoria Erasmus+ 2016: Resultados - España

Inicio
Ministerios
Servicios al ciudadano
Prensa
Educación
Cultura
Deporte

▶

Ud. está aquí: [Inicio](#) ▶ [Servicios al ciudadano](#) ▶ [Estadísticas](#) ▶ [Estadísticas de la Educación](#) ▶ [Relación con el exterior](#) ▶ [Estadística de Programas educativos europeos. Erasmus+](#)

**Estadísticas**

- ▼ **Estadísticas de la Educación**
  - ▶ Enseñanzas no universitarias
  - ▶ Estadísticas e Informes Universitarios
  - ▶ Recursos económicos
  - ▶ **Relación con el exterior**
  - ▶ Formación, mercado laboral y abandono educativo-formativo
  - ▶ Indicadores y publicaciones de síntesis
  - ▶ Últimas estadísticas publicadas
- ▶ Estadísticas de Cultura
- ▶ Estadísticas de Deporte

## Estadística de Programas educativos europeos. Erasmus+

La Estadística de Progr conocimiento de los aspe programa Erasmus+ de la cooperación transnacion: Educación de Personas presentan series histórica S.G. de Estadística y Esti Educación (SEPIE) admi administrativos que gener

Última actualización: 19 d

- **Nota Resumen C**
- ▶ Educación Superior
- ▶ Formación Profesio
- ▶ Educación Escolar
- ▶ Educación de Persc

**Metodología**


- **Metodología**




Estamos trabajando  
en esta sección

## Convocatoria Erasmus+ 2017 – Informes finales


956  
Proyectos  
adjudicados




871  
Proyectos  
(Informe final)



323  
Proyectos de  
16 meses  
(Concluida la  
evaluación)



548  
Proyectos de  
24 meses  
(Junio de 2019)



2

# Convocatoria Erasmus+ 2019

## Presupuesto Erasmus+ 2019 – Educación Superior

Acción Clave	Presupuesto	
Movilidad entre países del programa (KA103)*	114,9 millones de euros	+8,3%
Movilidad entre países del programa y asociados (KA107)**	23,7 millones de euros	+24,9%
Asociaciones Estratégicas (KA203)	8,4 millones de euros	+53,4%
<b>Total Educación Superior</b>	<b>146,9 millones de euros</b>	<b>+13,0%</b>

\* Incluye cofinanciación MCIU por importe de 29 millones de euros

\*\* Incluye cofinanciación MCIU por importe de 1 millones de euros

## Presupuesto 2019 – Cofinanciación nacional





## KA103 – Ayudas solicitadas en España en 2019

Acción	Nº proyectos	Nº movilidades	Duración (meses/días)	Ayuda (€)
estudios	222	41.868	303.047	80.190.628
prácticas	983	15.429	49.064	18.770.616
<b>Movilidad de estudiantes</b>		<b>57.297</b>	<b>352.111</b>	<b>98.961.244</b>
docencia	263	4.913	24.405	3.942.670
formación	827	5.938	32.362	5.112.050
<b>Movilidad de personal</b>		<b>10.851</b>	<b>56.767</b>	<b>9.054.720</b>
<b>Apoyo organizativo</b>	<b>1.072</b>	<b>68.148</b>		<b>16.799.100</b>
<b>Importe de ayudas solicitadas</b>				<b>124.815.064</b>



ADJUDICACIÓN DE  
**SUBVENCIONES**  
**ERASMUS+ 2019**  
PARA PROYECTOS KA103  
**DE EDUCACIÓN SUPERIOR**



## KA103 – Adjudicación inicial de movilidades

### DATOS RELEVANTES

1.065 proyectos seleccionados

**87**  
Universidades y  
Centros adscritos



**103**  
Instituciones  
Artísticas  
Superiores



**44**  
Consortios  
de Movilidad



**831**  
Centros FP  
Grado Superior



## KA103 – Adjudicación inicial de movilidades

### MOVILIDADES

58.012 movilidades adjudicadas

**38.745**

Estudios



**12.562**

Prácticas



**3.255**

Docencia



**3.450**

Formación



**51.307** para estudiantes

**6.705** para personal

## KA103 – Adjudicación inicial de subvenciones

**ESTUDIANTES**

**82.363.404 €**

**Estudios**

**68.643.543 €**

**Prácticas**

**13.719.861 €**

**PERSONAL**

**5.370.975 €**

**Docencia**

**2.581.395 €**

**Formación**

**2.789.580 €**

**APOYO ORGANIZATIVO**

**14.359.700 €**

**Reserva  
Estudiantes  
desfavorecidos  
12.592.605 €**

**Reserva  
Necesidades  
especiales  
200.000 €**

**ADJUDICACIÓN INICIAL**

**102.094.079 €**

**RESERVA FONDOS**

**12.792.605 €**

3

# Brexit

## Brexit

El Reino Unido sigue siendo Estado Miembro de pleno derecho de la Unión Europea hasta el **31 de octubre de 2019**, con todos los derechos y obligaciones correspondientes. Por lo tanto, el Reino Unido continúa participando plenamente en el programa Erasmus+.

- ✓ Si finalmente hay acuerdo antes del 31 de octubre de 2019, el Reino Unido continuará siendo país elegible del programa Erasmus+.
- ✓ En caso de que el Reino Unido abandone la Unión Europea sin un acuerdo, escenario de "no acuerdo", el **Reglamento de contingencia Erasmus+** se aplicaría para evitar la interrupción de las movilidades de estudiantes y personal (docente y no docente) en los proyectos de movilidad por motivos de aprendizaje de la Acción Clave 1 (KA1) para todos los sectores educativos, siempre que se trate de movilidades en curso (hacia o desde el Reino Unido) antes de la fecha de salida del Reino Unido de la Unión Europea (31 de octubre de 2019).

4

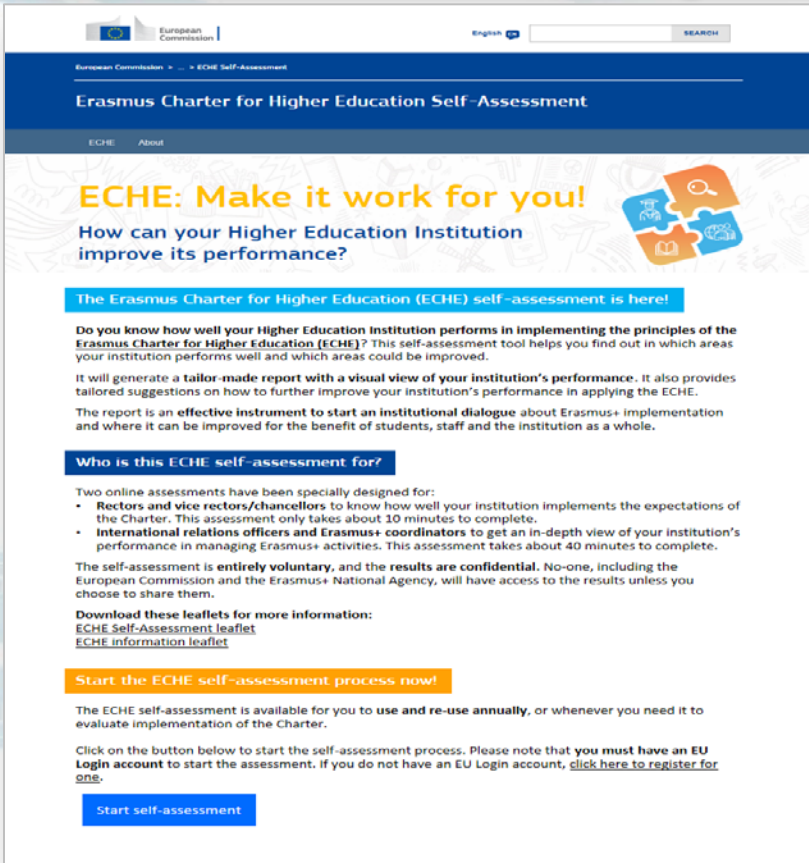
# Herramienta de autoevaluación de la ECHE



## Características

- **Permite a las Instituciones de Educación Superior autoevaluar cómo implementan los principios de la ECHE**
- **Dos evaluaciones separadas:**
  - Una para los Rectores/ Vicerrectores / Directores
  - Otra para los Responsables de Relaciones Internacionales/Coordinadores Erasmus+
- **Servicio gratuito, voluntario y confidencial**
- **Produce informes a medida**, incluyendo enlaces a estudios de casos relevantes.
- **Los informes se pueden compartir** con compañeros de trabajo.

# Página de Inicio



The screenshot shows the homepage of the Erasmus Charter for Higher Education Self-Assessment tool. At the top, there is a navigation bar with the European Commission logo, a language selector set to 'English', and a search box. Below the navigation bar, the main heading reads 'Erasmus Charter for Higher Education Self-Assessment'. A prominent yellow banner says 'ECHE: Make it work for you!' followed by the question 'How can your Higher Education Institution improve its performance?'. To the right of this text is an illustration of four interlocking puzzle pieces in orange, blue, and white, each containing a different icon related to education and assessment. Below the banner, a blue box contains the text 'The Erasmus Charter for Higher Education (ECHE) self-assessment is here!'. The main body of text explains that the tool helps institutions find out how well they perform in implementing the principles of the Erasmus Charter for Higher Education (ECHE) and provides tailored suggestions for improvement. It also mentions that the report is an effective instrument for starting an institutional dialogue. A blue box asks 'Who is this ECHE self-assessment for?' and lists two target groups: Rectors and vice rectors/chancellors, and international relations officers and Erasmus+ coordinators. Below this, it states that the self-assessment is entirely voluntary and the results are confidential. A section titled 'Download these leaflets for more information:' provides links to 'ECHE Self-Assessment leaflet' and 'ECHE information leaflet'. A blue box encourages users to 'Start the ECHE self-assessment process now!'. The final paragraph explains that the tool is available for annual use and re-use, and provides a link to register for an EU Login account. At the bottom, there is a blue button labeled 'Start self-assessment'.

European Commission | English | SEARCH

Erasmus Charter for Higher Education Self-Assessment

ECHE About

## ECHE: Make it work for you!

How can your Higher Education Institution improve its performance?

**The Erasmus Charter for Higher Education (ECHE) self-assessment is here!**

Do you know how well your Higher Education Institution performs in implementing the principles of the **Erasmus Charter for Higher Education (ECHE)**? This self-assessment tool helps you find out in which areas your institution performs well and which areas could be improved.

It will generate a **tailor-made report with a visual view of your institution's performance**. It also provides tailored suggestions on how to further improve your institution's performance in applying the ECHE.

The report is an **effective instrument to start an institutional dialogue** about Erasmus+ implementation and where it can be improved for the benefit of students, staff and the institution as a whole.

**Who is this ECHE self-assessment for?**

Two online assessments have been specially designed for:

- **Rectors and vice rectors/chancellors** to know how well your institution implements the expectations of the Charter. This assessment only takes about 10 minutes to complete.
- **International relations officers and Erasmus+ coordinators** to get an in-depth view of your institution's performance in managing Erasmus+ activities. This assessment takes about 40 minutes to complete.

The self-assessment is **entirely voluntary**, and the **results are confidential**. No-one, including the European Commission and the Erasmus+ National Agency, will have access to the results unless you choose to share them.

**Download these leaflets for more information:**  
[ECHE Self-Assessment leaflet](#)  
[ECHE information leaflet](#)

**Start the ECHE self-assessment process now!**


The ECHE self-assessment is available for you to **use and re-use annually**, or whenever you need it to evaluate implementation of the Charter.

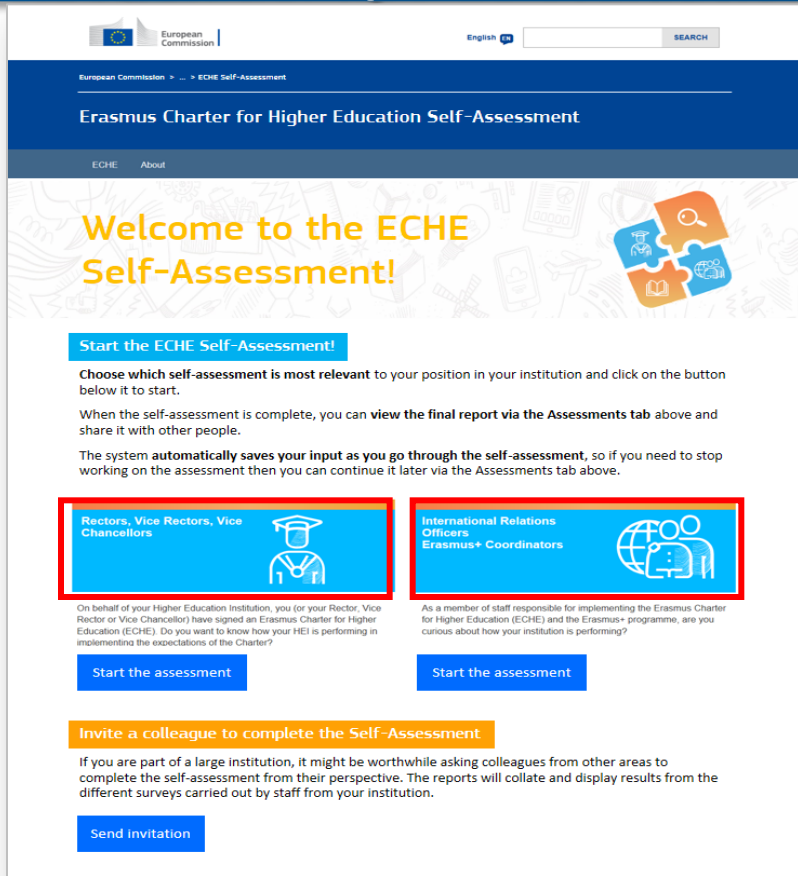
Click on the button below to start the self-assessment process. Please note that **you must have an EU Login account** to start the assessment. If you do not have an EU Login account, [click here to register for one](#).

[Start self-assessment](#)

[https://ec.europa.eu/programmes/erasmus-plus/eche/start\\_en](https://ec.europa.eu/programmes/erasmus-plus/eche/start_en)

# Selección del tipo de evaluación

(10 min.) 



The screenshot shows the 'Erasmus Charter for Higher Education Self-Assessment' page. At the top, there is a navigation bar with the European Commission logo, the text 'Erasmus Charter for Higher Education Self-Assessment', and a search bar. Below the navigation bar, the main heading reads 'Welcome to the ECHE Self-Assessment!'. A central section titled 'Start the ECHE Self-Assessment!' provides instructions: 'Choose which self-assessment is most relevant to your position in your institution and click on the button below it to start.' It also states that the system automatically saves input and that users can view final reports via the 'Assessments' tab. Two main options are presented in blue boxes with red borders: 'Rectors, Vice Rectors, Vice Chancellors' (with a graduation cap icon) and 'International Relations Officers Erasmus+ Coordinators' (with a globe icon). Each option has a 'Start the assessment' button. A third section, 'Invite a colleague to complete the Self-Assessment', includes a 'Send invitation' button.

 (40 min.)



# Evaluación del Rector/Vicerrector



**Assessment completed!**

**Rector / vice rector / vice chancellor**

Based on your answers, we have prepared an overview for you on the "Download results" button at the bottom of this page.

1



**Your institution has a strategy and an overarching structure supporting internationalisation**

Institutional average



Your assessment



**Feedback and suggestions for consideration**

The most effective way to have a strategy and overarching structure supporting internationalisation is to ensure that the strategy is embedded in the institutional strategic plan and known, by communicating it at all levels of the institution and displaying it prominently on the institution's website.

All the relevant staff throughout the institution should be involved in its effective implementation. Depending on the size of the institution, the relevant staff could include the person or office in charge of internationalisation, the person or an office in charge of international relations, mobility and international projects, academic and administrative staff in contact with incoming and outgoing mobile participants, etc.

The most efficient way to choose partners for international cooperation is to select them based on areas of mutual interest to improve the quality of learning and teaching in common areas, by using the experience and involvement of academics. The selection can also be based on, but not limited to, the compatibility of study programmes. The selection can sometimes start from a request from students, but basing the choice of partners solely on this criterion shows that there is no institutional strategy in place.



# Resultados y sugerencias



## Assessment completed!

### Rector / vice rector / vice chancellor

Based on your answers, we have prepared an overview for you on the "Download results" button at the bottom of this page.

1



### Your institution has a strategy and an overarching structure supporting internationalisation

Institutional average



Your assessment



### Feedback and suggestions for consideration

The most effective way to have a strategy and overarching structure supporting internationalisation is to ensure that the strategy is embedded in the institutional strategic plan and known, by communicating it at all levels of the institution and displaying it prominently on the institution's website.

All the relevant staff throughout the institution should be involved in its effective implementation. Depending on the size of the institution, the relevant staff could include the person or office in charge of internationalisation, the person or an office in charge of international relations, mobility and international projects, academic and administrative staff in contact with incoming and outgoing mobile participants, etc.

The most efficient way to choose partners for international cooperation is to select them based on areas of mutual interest to improve the quality of learning and teaching in common areas, by using the experience and involvement of academics. The selection can also be based on, but not limited to, the compatibility of study programmes. The selection can sometimes start from a request from students, but basing the choice of partners solely on this criterion shows that there is no institutional strategy in place.



# Evaluación de las ORIS/Coordinadores Erasmus+



## Complete your assessment as Relation Officer/Erasmus+ Coordinators

Complete the assessment below by clicking all the appropriate boxes locate next to each sub-statement. At the end of the assessment your result will be displayed alongside relevant case material / good practice examples.

Your progress will be automatically saved through all the assessment.

Start

Complete

14



### With regards to the outcomes and experiences of Erasmus+ activities

Please choose the relevant options from the list below. If none of the responses are relevant, please move on to the next page.

- The results are monitored, evaluated and disseminated as a way to improve international cooperation and mobility activities
- The results are used systematically for the benefit of your institution, providing internationalisation at home, hence enhancing intercultural competences of non-mobile students and staff
- The results are exploited and disseminated, by providing participants with the results of cooperation projects and Erasmus+ mobility opportunities (e.g. presentations) to share funding possibilities
- Results of cooperation projects are made sustainable and often lead to future stronger international cooperation of the institution
- After the mobility Erasmus+ participants have the opportunity to present their new competences acquired
- After the mobility, the institution tracks graduates' progress and the impact mobility had e.g. on their employability

SAVE DRAFT

Submit

< Previous Page

Share this page



Facebook



Twitter



e-mail

More share options

# Resultados y sugerencias



**Assessment completed!**

## International Relations Officer/ Erasmus+ Coordinators

Based on your answers, we have prepared an overview for you on the "Download results" button at the bottom of this page.

### Overview

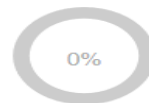
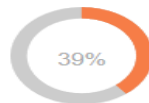
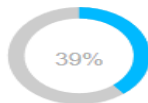


Your institution has a strategy and an overarching structure supporting internationalization

Institutional average

Your assessment

Faculty average

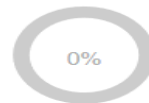
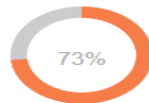
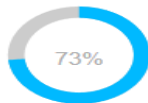


Your institution expresses its commitment to offering equal access and opportunities to Erasmus+ mobile participants from all backgrounds, through:

Institutional average

Your assessment

Faculty average



Your institution provides all of the information and support for incoming Erasmus+

# Resultados y sugerencias



**Assessment completed!**

## International Relations Officer/ Erasmus+ Coordinators

Based on your answers, we have prepared an overview for you on the "Download results" button at the bottom of this page.

### Detail

#### General recommendations

- 1**  **Your institution has a strategy and an overarching structure supporting internationalisation**

#### Must have

The internationalisation strategy is available and prominently displayed on your website


#### Guidance note:

Internationalisation is an important driver for institutional change, and has a great influence on the major activities of a higher education institution (HEI) i.e. education and research. The importance of internationalisation is recognised, and most institutions have a strategy for internationalisation. However, for a strategy to be efficient, and for it to drive the HEI's activities regarding internationalisation, there is a need for its acceptance from across the whole institution. In addition the strategy could also be accessible to external collaborative partners. It is highly important to have the institution's internationalisation and modernisation strategy published and easily accessible to all.


#### Case studies

The effective management and ownership of Erasmus + for 'internationalisation'  
Internationalisation at the University of Helsinki



- 2**  **Your institution has established a framework of Inter-Institutional Agreements for Erasmus+ mobility**



- 3**  **Your institution expresses its commitment to equal access and opportunities to mobile participants**



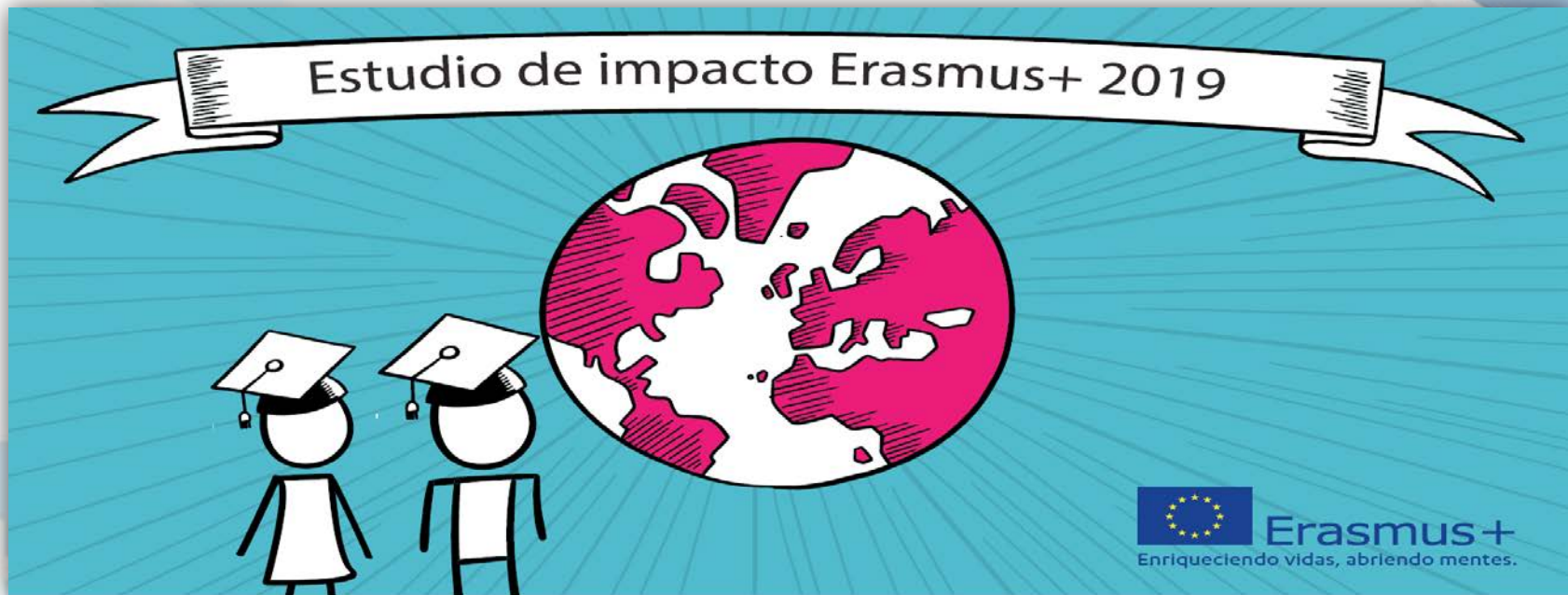


# Materiales de apoyo



5

## Estudio de impacto Erasmus+ 2019



## Erasmus+ te ayuda a encontrar tu camino en la vida



El 72 % de los estudiantes Erasmus+ dicen estar más seguros de lo que quieren hacer en la vida

El 80 % encuentran trabajo en el plazo de tres meses tras su graduación

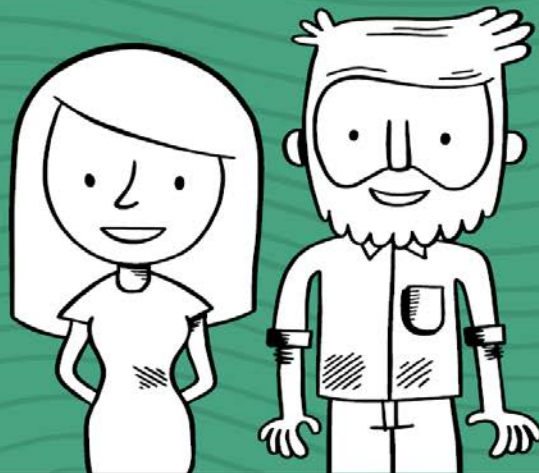


El 40 % de los estudiantes en prácticas consiguieron trabajo en la misma empresa donde realizaron sus prácticas

Fuente: Estudio de impacto Erasmus 2019



Los graduados Erasmus+ son más felices en sus carreras



El 90% utilizan las habilidades  
adquiridas durante su movilidad  
Erasmus+ en sus actuales puestos  
de trabajo

Al 84% se les ofrecen oportunidades  
de crecimiento profesional

Tienen al menos el **doble de**  
probabilidades de trabajar  
en el extranjero

Fuente: Estudio de impacto Erasmus 2019



GOBIERNO  
DE ESPAÑA

MINISTERIO  
DE CIENCIA, INNOVACIÓN  
Y UNIVERSIDADES

sepie

SERVICIO ESPAÑOL PARA LA  
INTERNACIONALIZACIÓN DE LA EDUCACIÓN



Erasmus+

Enriqueciendo vidas, abriendo mentes.

Los estudiantes Erasmus+ se sienten más europeos

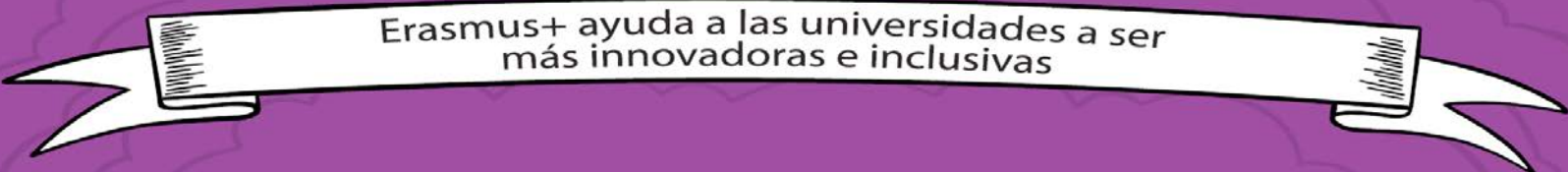


El 90% se siente  
más europeo

El 90% mejora sus  
habilidades  
para trabajar con  
personas de otras culturas

1 de cada 5  
conoció a su pareja  
gracias a Erasmus+

Fuente: Estudio de Impacto Erasmus 2019



Erasmus+ ayuda a las universidades a ser  
más innovadoras e inclusivas



El 80% de las universidades son más digitales, inclusivas y están conectadas al mercado laboral gracias a los proyectos de cooperación Erasmus+

2/3 de las universidades comparten que sus proyectos de cooperación Erasmus+ contribuyen a aumentar la inclusión social y la no discriminación en Educación Superior

Fuente: Estudio de impacto Erasmus 2019

Erasmus+ estimula el emprendimiento e ideas innovadoras



Más de 1/3  
de proyectos universitarios de cooperación  
Erasmus+ resultaron en la creación de empresas

Fuente: Estudio de impacto Erasmus 2019



6

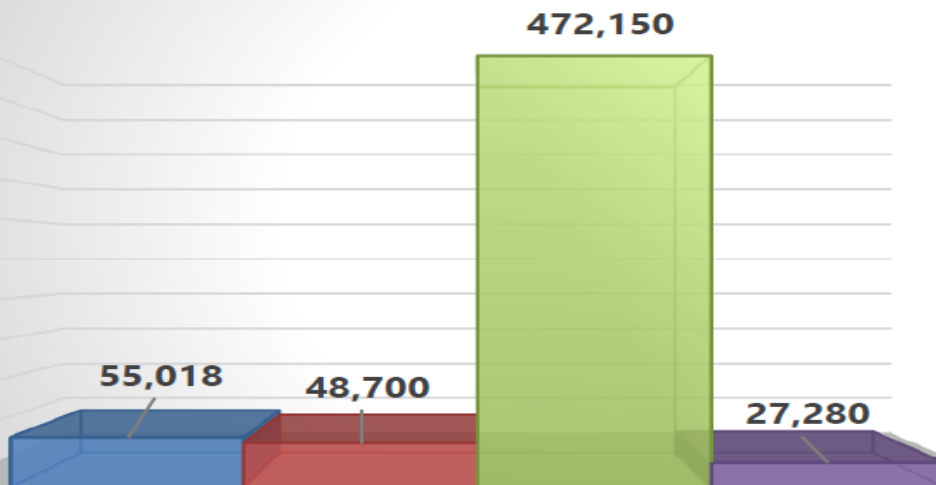
# El impacto económico de los estudiantes internacionales en España 2018

## Ámbito del estudio y objetivos

- ☉ ¿Cuántos **estudiantes internacionales** se matricularon en programas de Study Abroad (SA), Erasmus+, cursos de lengua y cultura, y posgrados de negocios?; y ¿cuál fue la duración media de su estancia en España?
- ☉ ¿Cuáles son los **indicadores** más precisos para la evaluación del impacto económico de cada grupo en el contexto español?
- ☉ ¿Cómo se pueden cuantificar los **efectos directos e indirectos** generados por los estudiantes matriculados en cada uno de estos programas?
- ☉ ¿Cómo se pueden cuantificar el **impacto económico** de estos estudiantes internacionales y el efecto multiplicador sobre otros sectores de la economía española?

## Ámbito del estudio y objetivos

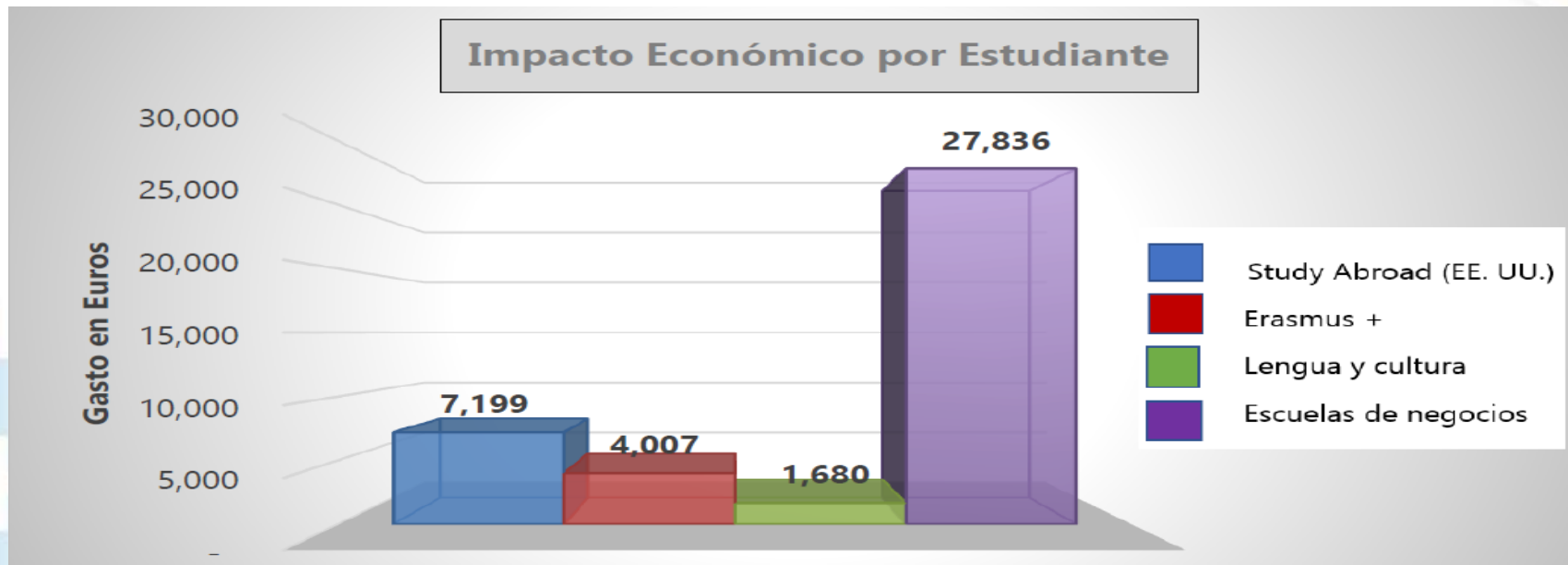
Numero de Estudiantes por Grupo



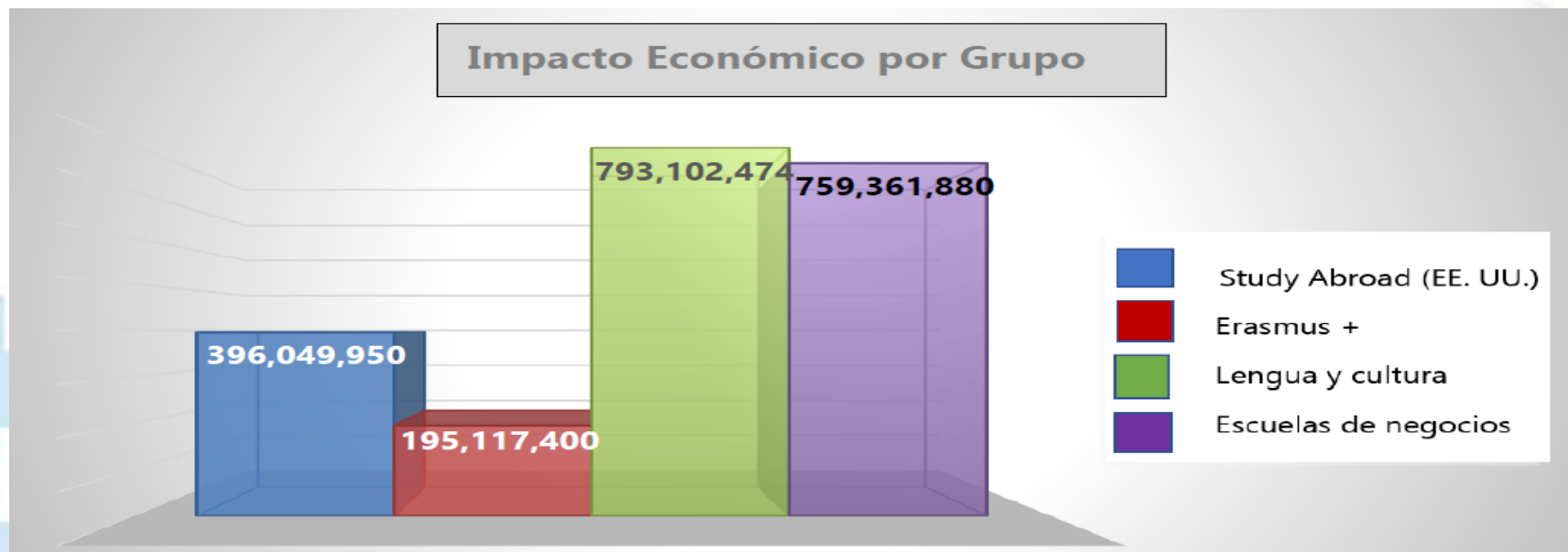
- Study Abroad (EE. UU.)
- Erasmus +
- Lengua y cultura
- Escuelas de negocios



## Ámbito del estudio y objetivos



## Ámbito del estudio y objetivos



## Ámbito del estudio y objetivos

GRUPO	IMPACTO DIRECTO		IMPACTO INDIRECTO		IMPACTO TOTAL
Study Abroad (EE. UU.)	€	134,138,022	€	261,911,928	€ 396,049,950
Erasmus	€	(29,000,000)	€	224,117,400	€ 195,117,400
Idioma y cultura	€	560,303,534	€	232,798,940	€ 793,102,474
Escuelas de negocios	€	484,749,720	€	274,612,160	€ 759,361,880
<b>SUMA</b>	<b>€</b>	<b>1,150,191,276</b>	<b>€</b>	<b>993,440,428</b>	<b>€ 2,143,631,704</b>
<b>Efecto Multiplicador: Impacto total / Impacto directo</b>					<b>1.86</b>

Dra. Cristina Grasset  
Da. Bárbara García Menéndez



SPAIN EDUCATION PROGRAMS

# ¡Gracias por su atención!



SERVICIO ESPAÑOL PARA LA  
INTERNACIONALIZACIÓN DE LA EDUCACIÓN

- 🌐 [www.sepie.es](http://www.sepie.es)
- 🌐 [www.erasmusplus.gob.es](http://www.erasmusplus.gob.es)
- ✉ [sepie@sepie.es](mailto:sepie@sepie.es)
- # ErasmusPlus

- f ErasmusPlusSEPIE
- 🐦 @sepiegob
- 📷 @sepie\_gob
- 📺 SEPIE